



SJ1256 TH

TELEHANDLER

KEY FEATURES

- 12,000 lbs (5,443 kg) Maximum lift capacity
- 56' 3" (17.1 m) Maximum lift height
- 6,000 lbs (2,721 kg) Capacity @ maximum lift height (no outriggers)
- 7,000 lbs (3,175 kg) Capacity @ maximum lift height (on outriggers)
- 42' 6" (12.95 m) Maximum forward reach
- 1,000 lbs (454 kg) Capacity @ maximum forward reach (no outriggers)
- 3,500 lbs (1,588 kg) Capacity @ maximum forward reach (on outriggers)
- Tier 4 final 107hp/320lb-ft Deutz TCD3.6L engine
- 22,500 lbs Drawbar pull
- 3 Speed Dana powershift transmission & Dana axles
- Yoke mounted lifting hook
- Rear towing hitch pin

STANDARD FEATURES

- Axle mount outriggers
- Auxiliary hydraulics
- Engine block heater
- Quick attach carriage mount
- Rear window with wiper
- Side window
- Suspension seat
- Single multifunction pilot operated joystick control
- In cab engine multifunction display
- Hydraulic test ports
- Lockable in cab storage box
- Fiberglass engine cowling
- Steel component and access covers
- Telematics ready
- 2 Year Gold Leaf Warranty (5 year structural warranty)

TIRE OPTIONS

- Foam filled 14 x 24 16PR grip Lug
- Airless solid rubber 14 x 24

† Capacities, and machine weights may differ when options are added.

‡ Certain option pricing not available at time of printing.

Preliminary specifications at time of printing. Standard lead times may be increased when optional equipment is added, consult factory.

All Skyjack warranties are subject to express limited warranty and all of other related terms, policies and procedures, as amended from time to time.

Please refer to www.skyjack.com/warranty-service

SJ1256 TH TELEHANDLER

12,000 lbs (5,443 kg) capacity, 56' 3" (17.14 m) maximum lift height

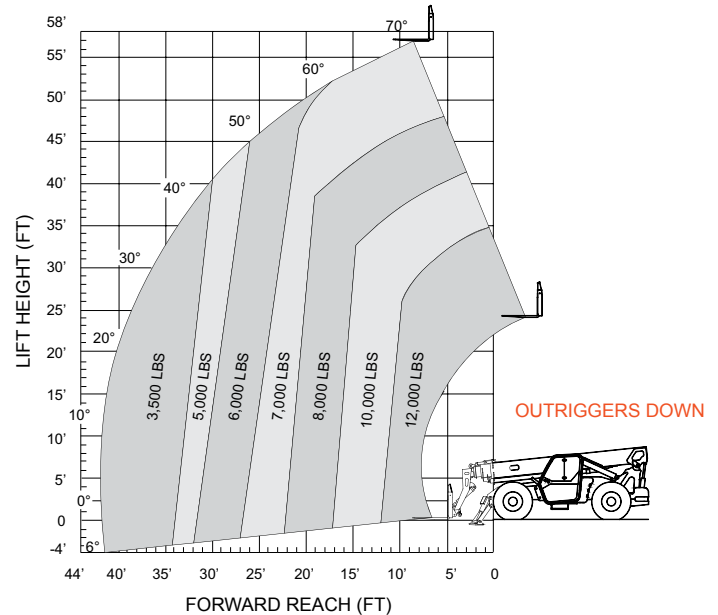
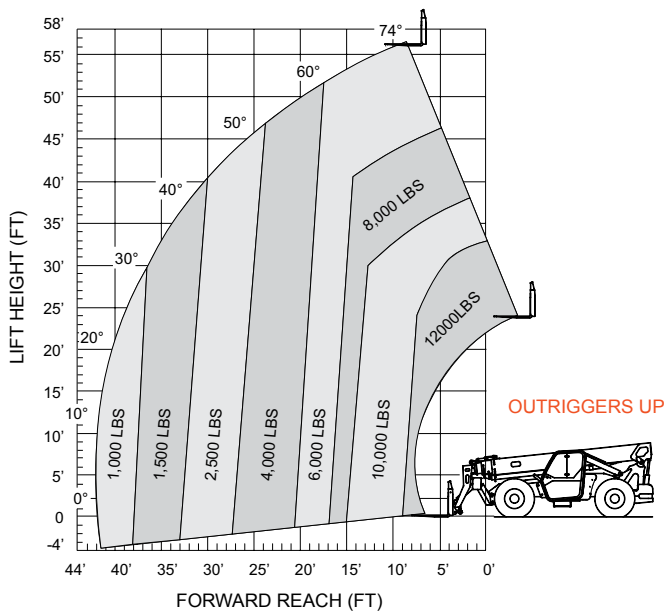
SPECIFICATIONS	SJ1256 TH
Maximum Lift Capacity	12,000 lbs (5,443 kg)
Maximum Lift Height	56' 3" (17.14 m)
Rated Lift Capacity @ Maximum Height	6,000 lbs (2,721 kg)
Rated Lift Capacity @ Max Height w. O/R	7,000 lbs (3,175 kg)
Maximum Forward Reach	42' 6" (12.95 m)
Rated Lift Capacity @ Maximum Reach	1,000 lbs (454 kg)
Rated Lift Capacity @ Max Reach w. O/R	3,500 lbs (1,588 kg)
Overall Length - Less Forks	23' 1" (7.03 m)
Overall Height - Stowed	8' 3" (2.51 m)
Overall Width	8' 5" (2.56 m)
Ground Clearance	19" (48.3 cm)
Turning Radius - Outside	153" (3.73 m)
Operating Weight	34,500 lbs (15,649 kg)
Engine	107hp / 320 lb-ft Deutz TCD 3.6L T4F
Max Travel Speed - Forward	15 mph (24 km/h)
Drawbar Pull	22,500 lbs
Transmission	Dana Powershift, 3 Speeds F/R
Axles	Dana
Steering	3 mode (Front Wheel, 4 Wheel, Crab)
Tires	Pneumatic 14 x 24 16PR Grip Lug

OPTIONAL EQUIPMENT

- Closed cab (adds front and top window with wipers, full door, heater/defroster, operator fan)
- Air conditioning (closed cab only)
- Service convenience package (remote axle grease points & clean drain engine oil pan valve)
- Cold weather package (cold start engine oil, 60/40 antifreeze mix, battery blanket & hyd. tank heater)
- Four wheel fenders
- Road light package (2 front headlights, front & rear turn signals, tail lights, brake lights)
- Work light package (2 front facing & two rear facing halogen work lights)
- Boom light package (2 boom mounted LED work lights)
- Rotating beacon
- Positive air shut off valve
- Reserve brake system
- Pintle hitch (in lieu of standard hitch pin)
- Non destructive testing
- Warranty Options (3 year or 5 year plans available)

ATTACHMENTS

- 48", 60" or 72" Quick attach floating pin carriage
- 48", 60" or 72" Side tilting carriage
- 72" Swing carriage
- 2' High capacity jib boom
- 12' or 15" Truss boom
- 1.75 Cubic yard bucket



Skyjack Head Office

55 Campbell Rd. Guelph, ON Canada N1H 1B9
 Sales Inquiries: 1-877-755-4387 (1-877-SJLIFTS)
 Main Switchboard: 1-800-265-2738
 Phone: 519-837-0888
 Fax: 519-837-8104
 Email: skyjack@skyjack.com
 www.skyjack.com

IMPORTANT

- Machine design complies with ANSI/ITSDF B56.6-2011 stability requirements for rough terrain forklifts.
- Rated capacities shown are with machine on firm level ground, steered straight with frame level and on properly inflated tires.
- Read boom angle and boom extension, then determine allowable load from chart.
- Do not exceed rated loads as dangerous and unstable machine conditions will result.
- Always travel with boom retracted in the lowest possible position.

