



# SJ1044 TH

## TELEHANDLER

### KEY FEATURES

- 10,000 lbs (4,535 kg) Maximum lift capacity
- 44'3" (13.49 m) Maximum lift height
- 7,000 lbs (3,175 kg) Capacity @ maximum lift height (no outriggers)
- 8,000 lbs (3,629 kg) Capacity @ maximum lift height (on optional outriggers)
- 29'6" (9.0 m) Maximum forward reach
- 1,800 lbs (816 kg) Capacity @ maximum forward reach (no outriggers)
- 4,700 lbs (2,132 kg) Capacity @ maximum forward reach (on optional outriggers)
- DPF & DEF Free Tier 4 final 74hp/287lb-ft Deutz TCD 3.6L engine
- 20,000 lbs Drawbar pull
- 3 Speed Dana powershift transmission & Dana axles
- Yoke mounted lifting hook
- Rear towing hitch pin

### OPTIONAL POWERPLANT

- Tier 4 Final 107hp / 320 lb/ft Deutz TCD 3.6L (includes DEF/SCR system)

### STANDARD FEATURES

- Auxiliary hydraulics
- Engine block heater
- Quick attach carriage mount
- Rear window with wiper
- Side window
- Suspension seat
- Single multifunction pilot operated joystick control
- In cab engine multifunction display
- Hydraulic test ports
- Lockable in cab storage box
- Fiberglass engine cowling
- Steel component and access covers
- 2 Year Gold Leaf Warranty (5 year structural warranty)

### TIRE OPTIONS

- Foam filled 14 x 24 16PR grip Lug
- Airless solid rubber 13 x 24

# SJ1044 TH TELEHANDLER

10,000 lbs (4,535 kg) capacity 44' 3" (13.49 m) maximum lift height

## SPECIFICATIONS

### SJ1044 TH

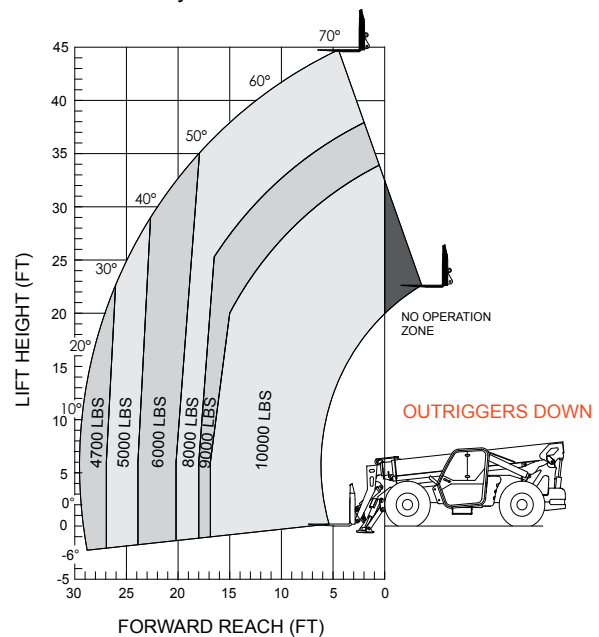
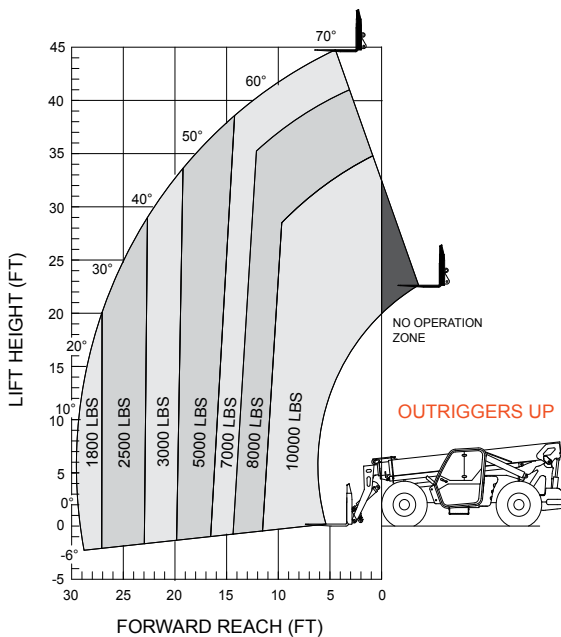
Maximum Lift Capacity	10,000 lbs (4,535 kg)
Maximum Lift Height	44' 3" (13.49 m)
Rated Lift Capacity @ Maximum Height	7,000 lbs (3,175 kg)
Rated Lift Capacity @ Max Height w. O/R	8,000 lbs (3,629 kg)
Maximum Forward Reach	29' 6" (8.03 m)
Rated Lift Capacity @ Maximum Reach	1,800 lbs (816 kg)
Rated Lift Capacity @ Max Reach w. O/R	4,700 lbs (2,132 kg)
O/A Length - Less Forks	21' 2" (6.45 m)
Overall Height - Stowed	8' 1" (2.47 m)
Overall Width	8' 5" (2.56 m)
Ground Clearance	19" (48.3 cm)
Turning Radius - Outside	147" (3.73 m)
Operating Weight	27,645 lbs (12,540 kg)
Engine	74hp / 287 lb/ft Deutz TCD 3.6L T4F
Max Travel Speed - Forward	15 mph (24 km/h)
Drawbar Pull	20,000 lbs
Transmission	Dana Powershift, 3 Speeds F/R
Axles	Dana
Steering	3 mode (Front Wheel, 4 Wheel, Crab)
Tires	Pneumatic 14 x 24 16PR Grip Lug

## OPTIONAL EQUIPMENT

- Axle mount outriggers
- Closed cab (adds front and top window with wipers, full door, heater/defroster, operator fan)
- Air conditioning (closed cab only)
- Service convenience package (remote axle grease points & clean drain engine oil pan valve)
- Cold weather package (cold start engine oil, 60/40 antifreeze mix, battery blanket & hyd. tank heater)
- Four wheel fenders
- Road light package (2 front headlights, front & rear turn signals, tail lights, brake lights)
- Work light package (2 front facing & 2 rear facing halogen work lights)
- Boom light package (2 boom mounted LED work lights)
- Rotating beacon
- Positive air shut off valve
- Reserve brake system
- Pintle hitch (in lieu of standard hitch pin)
- Non destructive testing

## ATTACHMENTS

- 48", 60" or 72" Quick attach floating pin carriage
- 48", 60" or 72" Side tilting carriage
- 72" Swing carriage
- 2' High capacity jib boom
- 12' or 15' Truss boom
- 1.75 Cubic yard bucket



### Skyjack Head Office

55 Campbell Rd. Guelph, ON Canada N1H 1B9  
 Sales Inquiries: 1-877-755-4387 (1-877-SJLIFTS)  
 Main Switchboard: 1-800-265-2738  
 Phone: 519-837-0888  
 Fax: 519-837-8104  
 Email: skyjack@skyjack.com  
 www.skyjack.com

### IMPORTANT

- Machine design complies with ANSI/ITSDF B56.6-2011 stability requirements for rough terrain forklifts.
- Rated capacities shown are with machine on firm level ground, steered straight with frame level and on properly inflated tires.
- Read boom angle and boom extension, then determine allowable load from chart.
- Do not exceed rated loads as dangerous and unstable machine conditions will result.
- Always travel with boom retracted in the lowest possible position.

